

SIR ROBERT PATTINSON ACADEMY



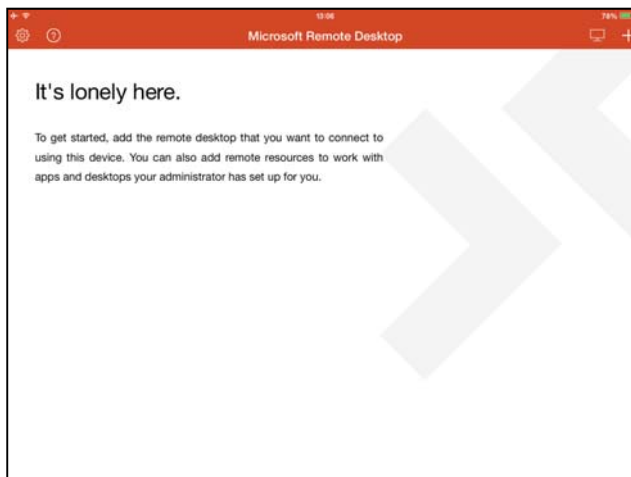
**APPLE iPhone and iPad
REMOTE ACCESS—LOGIN PROCESS**

Robert Pattinson Academy, Apple Remote Access Login Process:

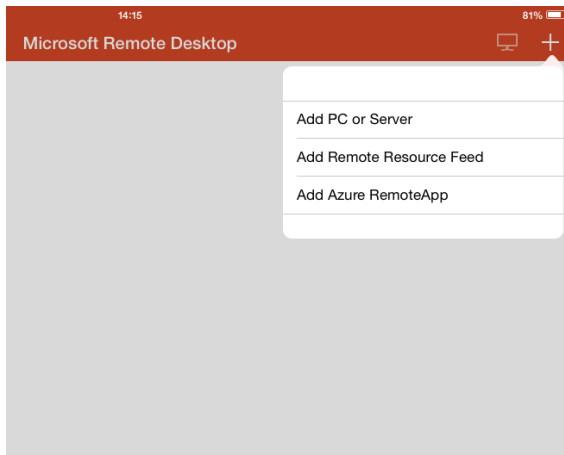
1. Download the Microsoft Remote Desktop App from iTunes Store.



2. Click the + button (at the top right)



3. Select Add PC or Server

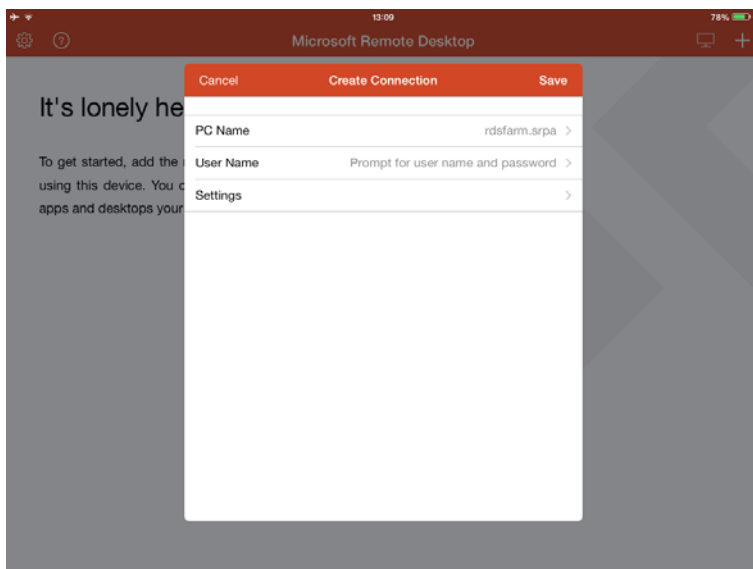


4. Enter the following details:-

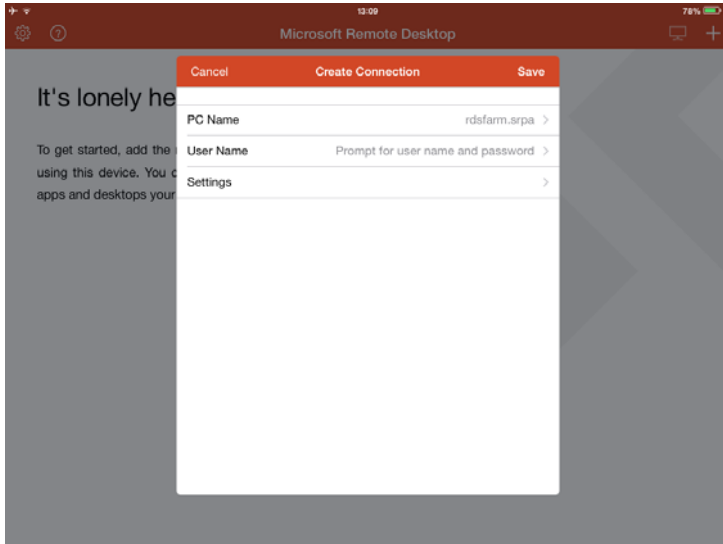
PC Name: rdsfarm.srpa.co.uk

Username: rps*(your username)*

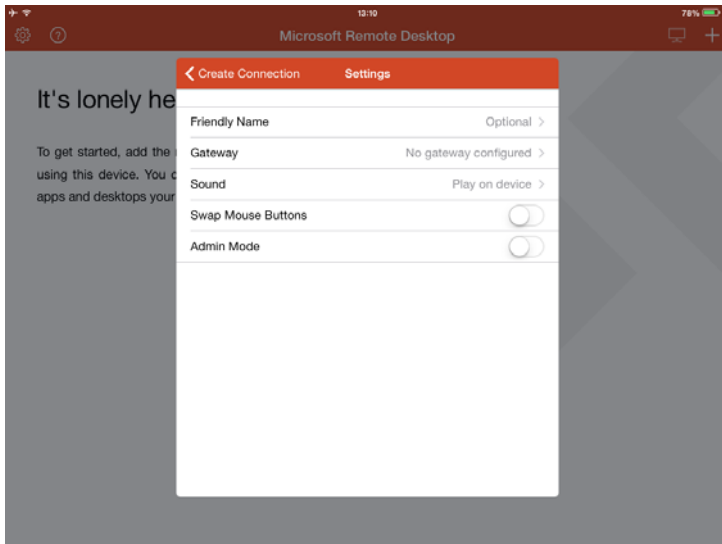
Password: *(your network password)*



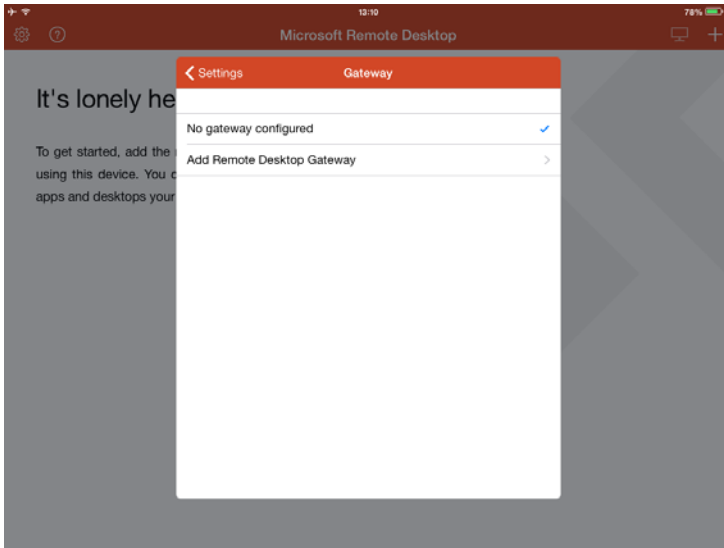
5. Select Settings



6. Select Gateway



7. Select Add Remote Access Gateway

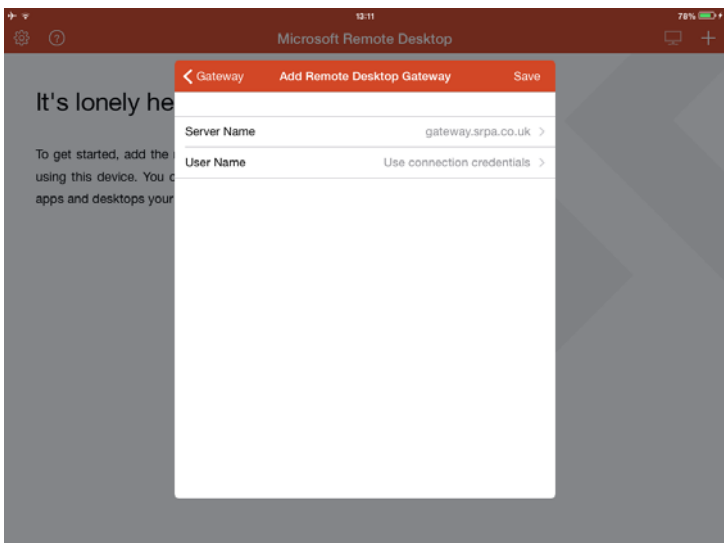


8. Enter the following details:-

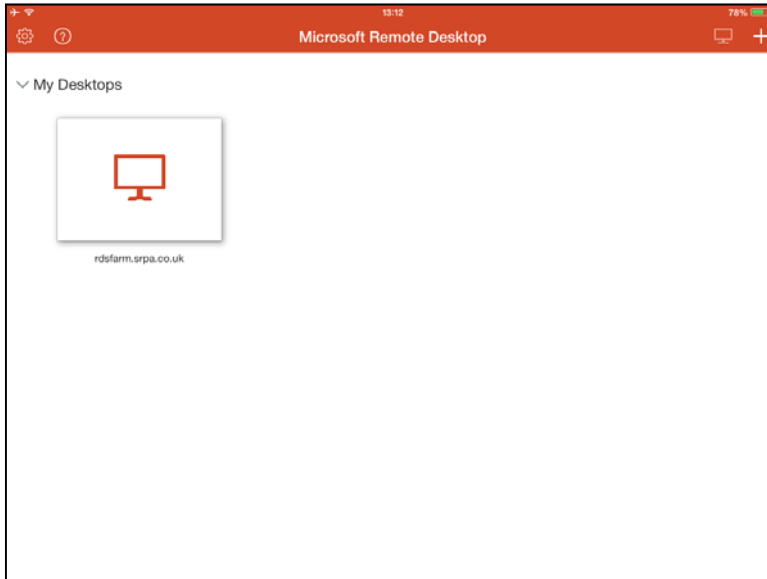
Server Name: gateway.srpa.co.uk

Username: rps\<(your username)

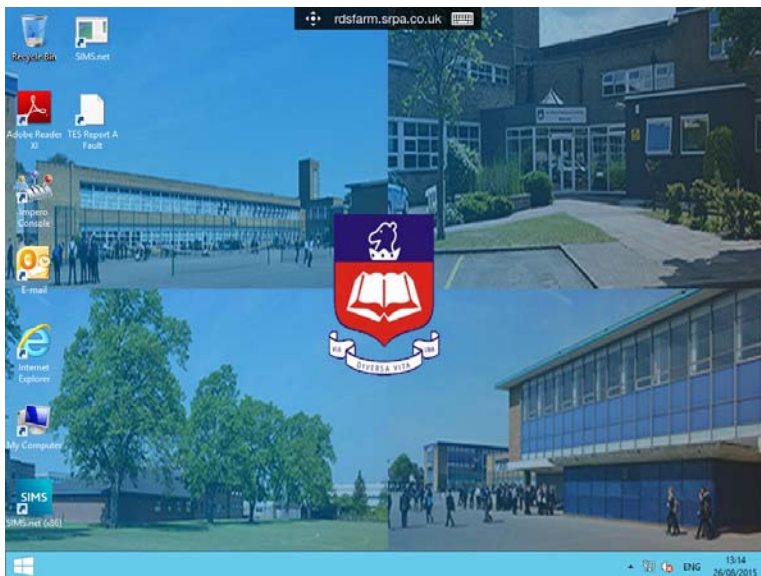
Password: (your network password)



9. Save and click connect



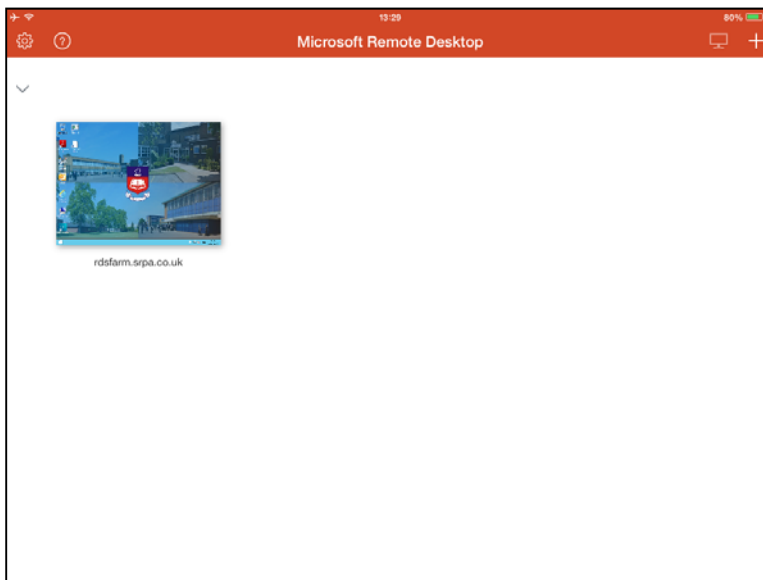
10. Once Connected this is the desktop which will be displayed



11. Screenshot of Remote Desktop Icon



12. Screenshot of opened Remote Desktop App after installation is complete.



SIR ROBERT PATTINSON ACADEMY



If you experience any problems or have any queries please email itsupport@srpa.co.uk. Please supply screenshots and a description of the problem whenever possible.